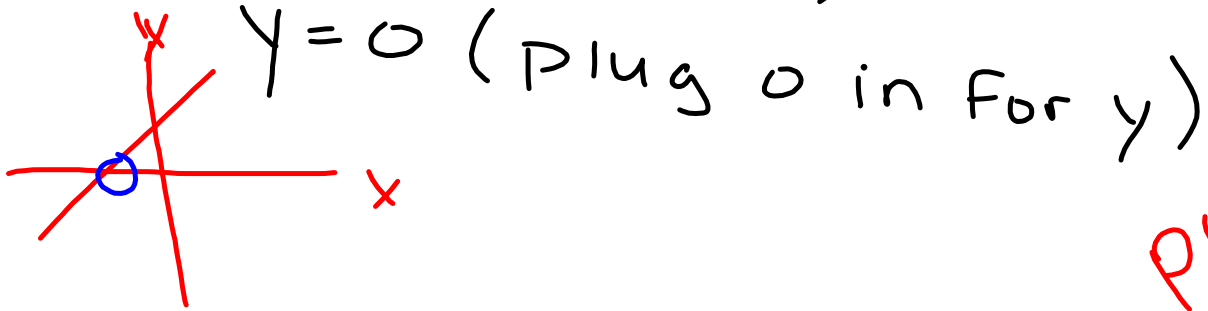


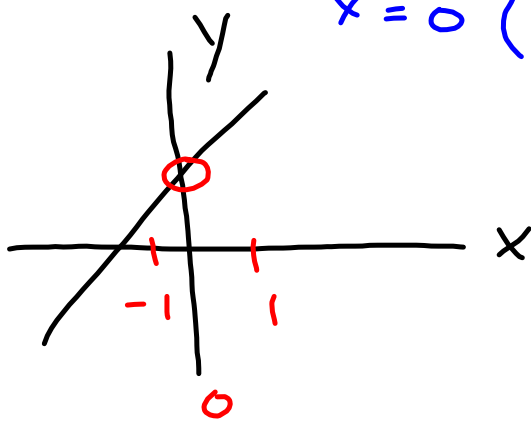
Review

x-int - To find, Set



PB

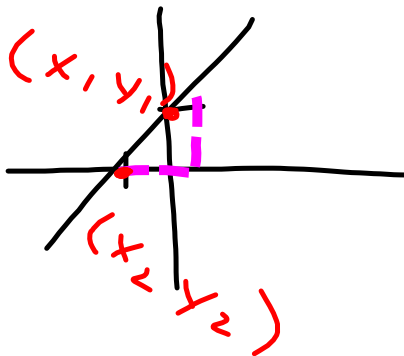
y-int - To find, Set



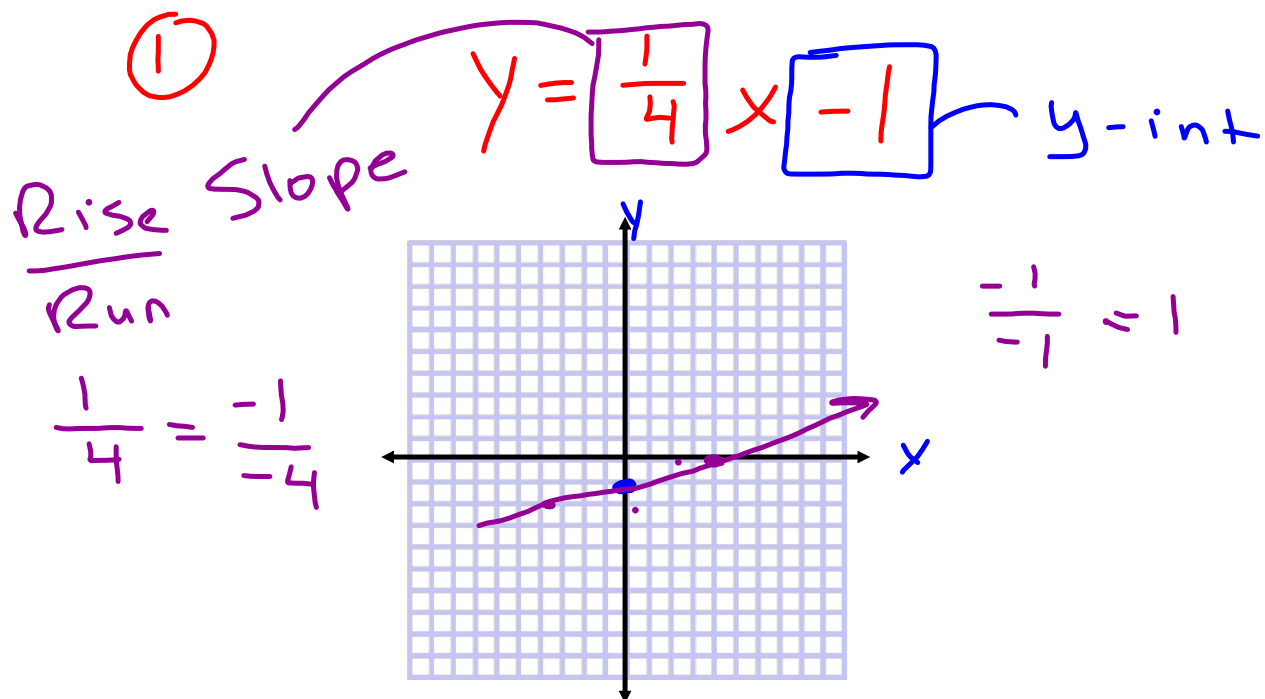
$$y = \boxed{m}x + b$$

Slope:

Rise
Run



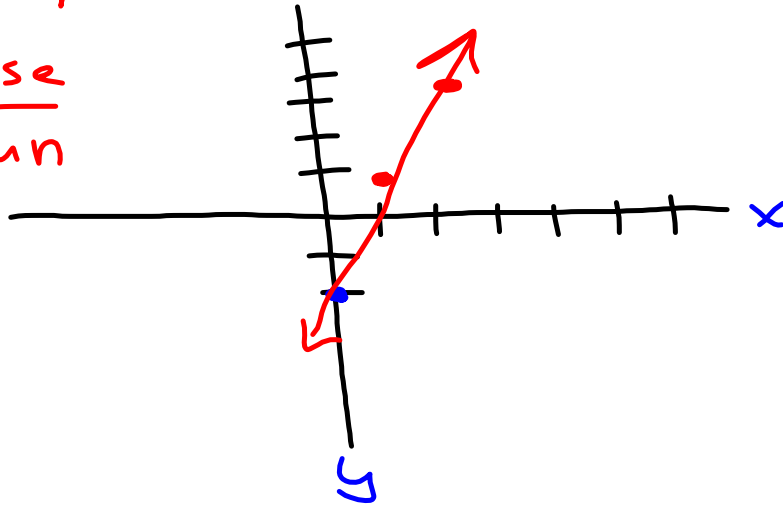
$$\frac{y_2 - y_1}{x_2 - x_1}$$



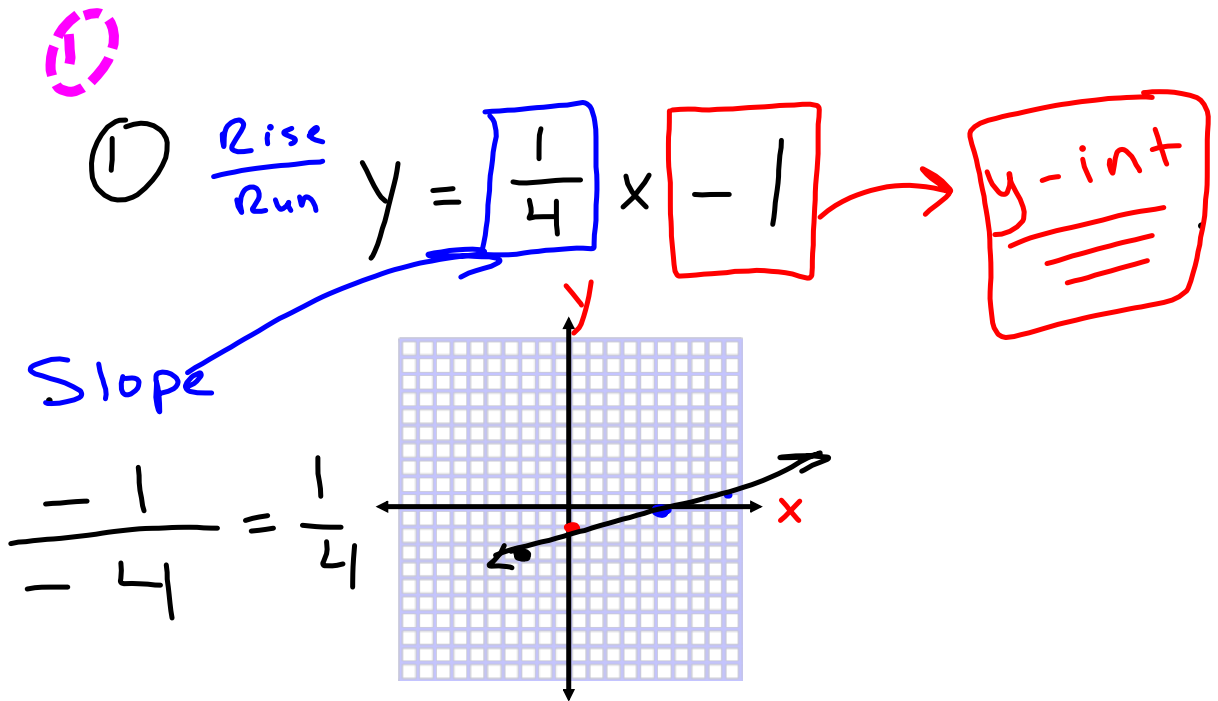
⑩ $y = 3x - 2$ y -int

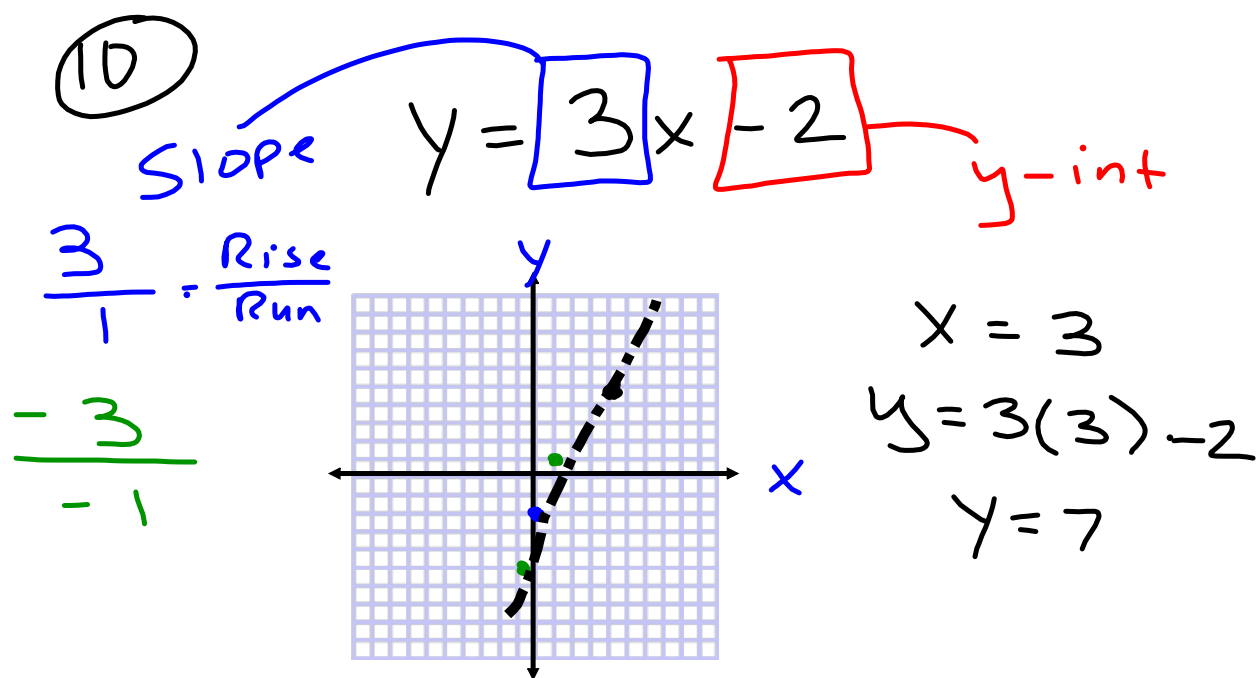
Slope

$$\frac{3}{1} = \frac{\text{Rise}}{\text{Run}}$$



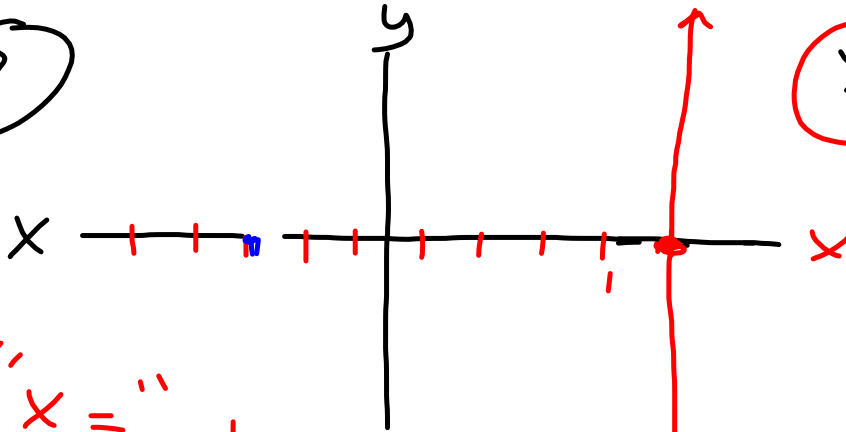
.





8

$x = 5$



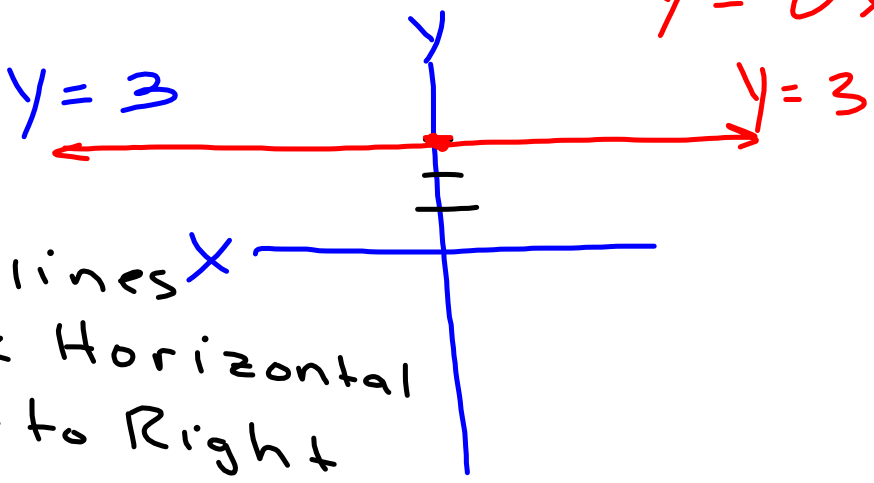
* "x=" lines

Your line will be vertical or up & down

$y = 3$

$y = 0x + 3$

9



* "y=" lines will be Horizontal or left to Right.